



## Wellington Street, Covent Garden WC2E

**PHILLIPS  
HARROD**  
LONDON'S PRIME REAL ESTATE

85 - 87 BAYHAM STREET  
LONDON NW1 OAG

45 CIRCUS ROAD  
LONDON NW8 9JH

We are delighted to have available this magnificent penthouse situated in an imposing corner building on the edge of Covent Garden's Piazza featuring large terraces and roof top views. This gorgeous residence is perfectly positioned to access all of the area's upmarket delights.

Forming part of a beautifully restored period building in the heart of Covent Garden the apartment comprises two bedrooms, two bathrooms, stunning open plan kitchen/reception and two large terraces.

The penthouse sits moments from the many amenities of the West End and has great transport links (Piccadilly line).

**ASKING PRICE:** £4,000,000

**TENURE:** Leasehold

**EPC RATING:** C

**COUNCIL TAX BAND:** H



85 - 87 BAYHAM STREET  
LONDON NW1 0AG

45 CIRCUS ROAD  
LONDON NW8 9JH

**0207 1234 152**

**<https://www.phillipsharrod.com>**

IMPORTANT NOTICE: These particulars are issued for guidance only. They are intended to give a fair overall description of the property and do not constitute a warranty of any kind or to be an offer or contract in whole or in part. Nothing in these particulars shall be deemed to constitute a representation that the property is in good structural condition nor that any services, appliances, equipment or facilities are in good working order, notwithstanding. That all information contained in these particulars, both in the text and in any plans and photographs is given in good faith, intending purchasers should make their own enquiries as to the accuracy of all matters upon which they intend to rely. Measurements are given for guidance only.





















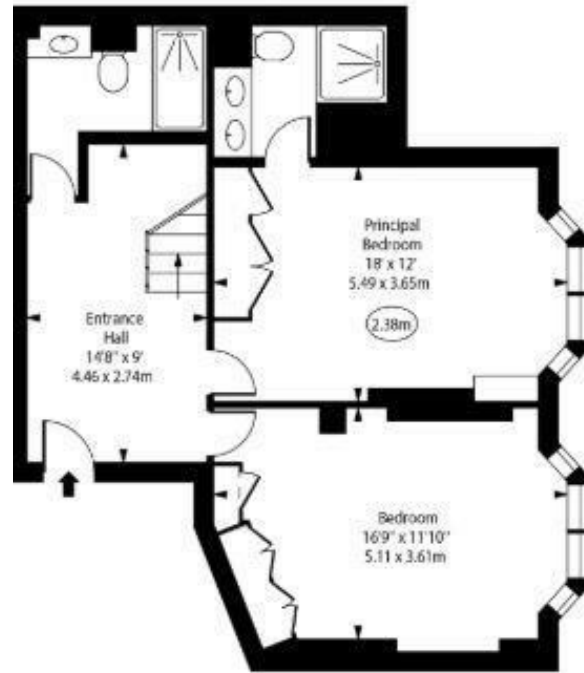




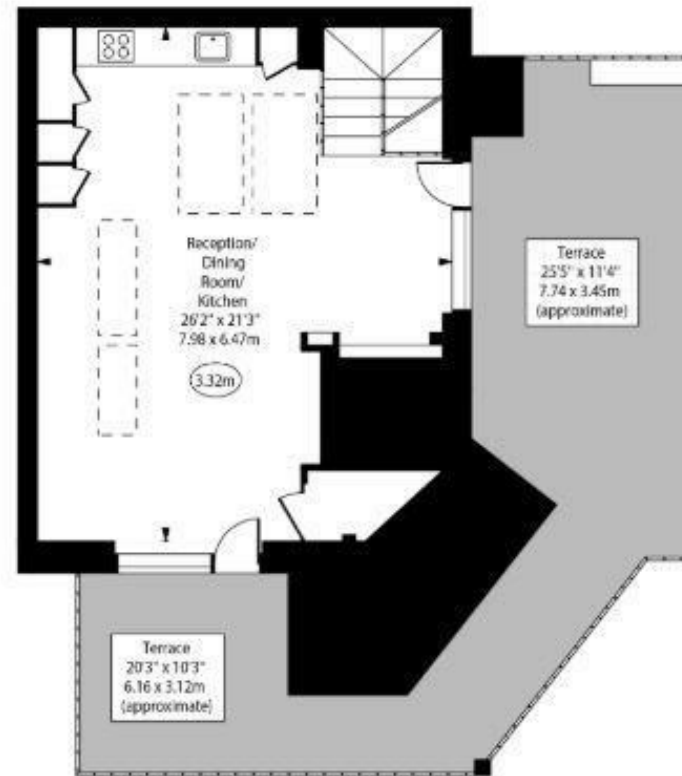
Wellington Street



○ - Ceiling Height



Third Floor



Fourth Floor

Approx Gross Internal Area 1200 Sq Ft - 111.48 Sq M

For Illustration Purposes Only - Not To Scale  
www.goldiens.co.uk  
Ref. No. 021416MS